

EXPOLED



LEDs
REFLEXION

www.reflexionleds.com

MAIN STRENGTHS

Fast mounting and dismantling

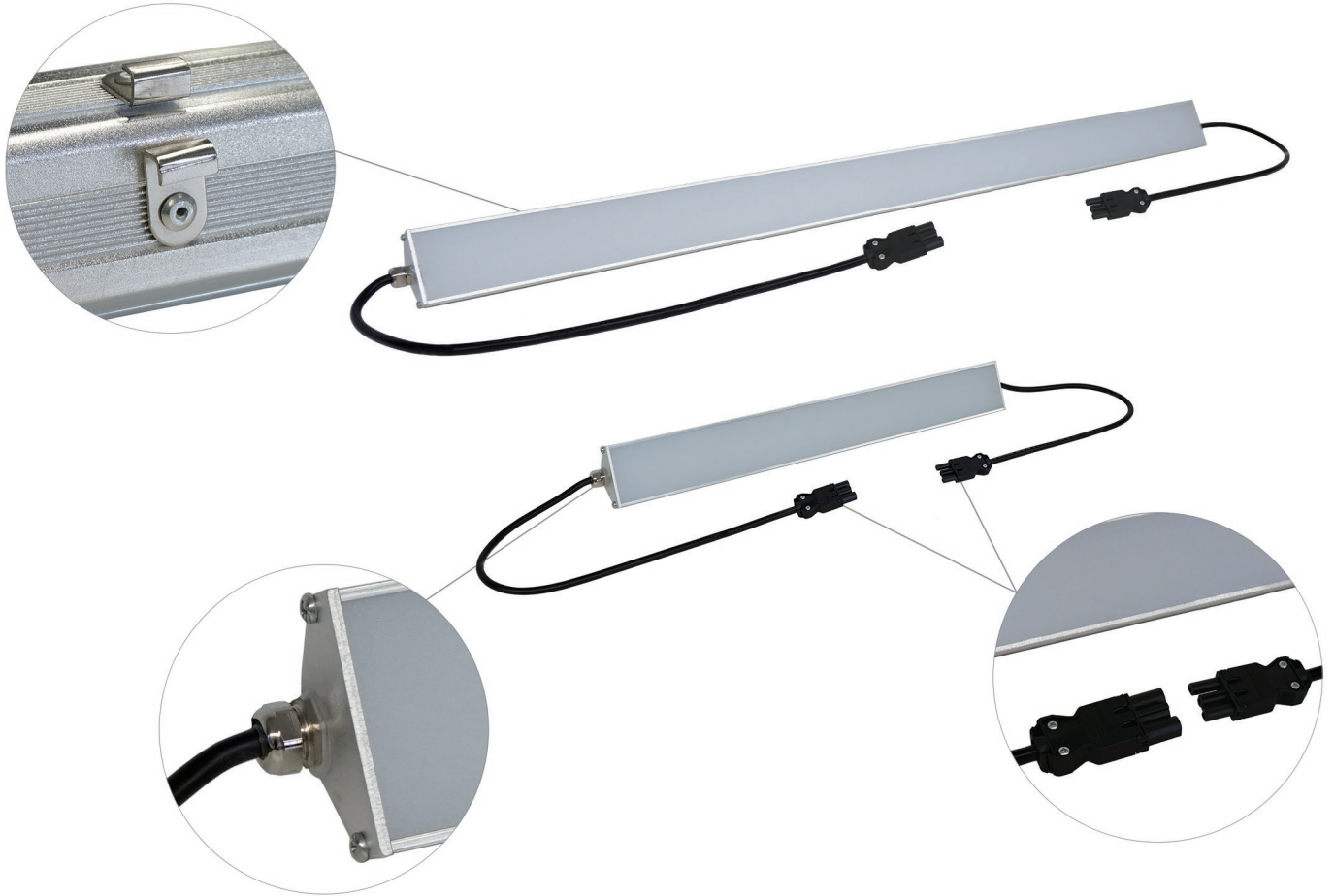
Diffuse light

Minimal maintenance

Low energy consumption

Easy storage

Solid and sturdy



SPECIFICATIONS		
MODELS	EXPOLED-1000	EXPOLED-500
POWER	40 W	20 W
DIMENSIONS	1032 x 62 x 43 mm	532 x 62 x 50 mm
LED TYPE	SMD	
COLOR TEMPERATURE	3000 / 4500 / 6000 K	3000 K
LUMINOUS FLUX	> 3500 lm	1700 lm
LUMINOUS EFFICACY	88 lm/W	85 lm/W
COLOR RENDERING INDEX	> 75	
BEAM ANGLE	180°	
HANGING	4 crochets	
POWER DATA	230-240 V, 50 Hz	
POWER PLUG	Cables x2	
CABLE LENGTH	2 x 50 cm	
WATERPROOF LEVEL	IP 50	
MATERIAL	Aluminium, Polycarbonate	
WEIGHT	1.32 kg	0.85 kg
FRAME COLOR	Grey	
OPTIONS		
ACCESSORIES	Flight-case (50 or 100 EXPOLED-1000/flight), Wieland connectors, Cable kit, Flight-case for cables, Mounting kit for wooden partitions	