

EXPO SCREEN

INDOOR



LEDs
REFLEXION

www.reflexionleds.com

MAIN STRENGTHS

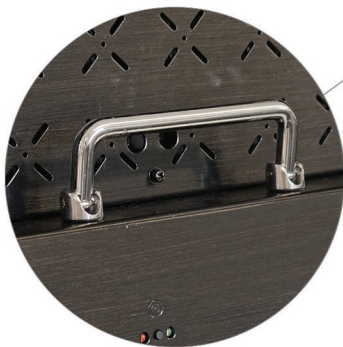
 Linsn operating system

 User-friendly locking system

 Reliable and sturdy

 Fast cabinet assembly

 Several dimensions available



SPECIFICATIONS

| | |
|-----------------------|----------------------------|
| CABINET DIMENSIONS | 500 x 500 x 60 mm |
| PITCH (H X V) | 3.9 mm |
| RESOLUTION (H X V) | 128 x 128 |
| LED TYPE | SMD |
| BRIGHTNESS | 1200 cd/m ² |
| VIEWING ANGLE | H : 160°/V : 100° |
| REFRESH RATE | 1920 Hz |
| INPUT | RJ45 |
| MEDIA MANAGEMENT | Linsn Receiving Card |
| MEDIA TYPE | Text, Logo, Video |
| POWER CONSUMPTION | Aver. 120 W/m ² |
| POWER DATA | AC 220-240 V, 50/60 Hz |
| WATERPROOF LEVEL | IP 40 |
| OPERATING TEMPERATURE | -20°/+50° |
| MATERIAL | Aluminium |
| WEIGHT | 7 kg |
| FRAME COLOR | Black |